



# Good Practice in Traditional Chinese Medicine Research Association 中医药规范研究学会



## January-February 2025 Newsletter

### **Editor-in-chief**

Mei Wang  
([mei.wang@subiomedicine.com](mailto:mei.wang@subiomedicine.com))

### **Deputy Editor**

Simon Ming Yuen Lee  
([simon-my.lee@polyu.edu.hk](mailto:simon-my.lee@polyu.edu.hk))

### **Section Editor**

-Chinese Materia Medica  
Ping Guo  
([s193231@hkbu.edu.hk](mailto:s193231@hkbu.edu.hk))

### **Executive Editor**

Jess Kit Ieng Kuok  
([kuokkitieng@gmail.com](mailto:kuokkitieng@gmail.com))



## A. GP-TCM RA updates

01

- A1 Editorials and editorial opinions/news
- A2 Letter to editor
- A3 Association updates
- A4 Member's achievements
- A5 Welcome new members
- A6 Current Corporate Members/ Institutional Members

## B. Report, Story and News

06

- B1 Report
  - Regional report
  - Interest groups report
- B2 Feature story- Interview with members or TCM experts
- B3 Other hot topics and TCM news

## C. Post-conference report

09

## D. Recommended reading and/or recent research highlight

11

## E. Upcoming events and calendar

12

## F. Resources

14

- F1 Journal: call for papers
- F2 Research collaboration matching
- F3 Research funding opportunities
- F4 Career opportunities

## G. Early Career Corner

16

- G1 Postgraduate Opportunities
- G2 Freely Accessible Learning Material
- G3 International Conferences
- G4 Scholarship
- G5 Education program opportunities
- G6 More information for students or young scholars



## H. Public education and outreach

30

## I. Chinese Materia Medica Highlights

32





## i Message from the Incoming President

First, I would like to thank all members of GP-TCM RA for your trust and confidence by voting for me to be the President for the term 2025-2026. I still remember my personal statement in the election process: "If elected, I will continue to promote high-quality evidence-based research of TCM and support the growth of GP-TCM via coordinating the work of the different Interest Groups and potential collaborations, particularly between Europe and China. Training of students in GP is an important tool for any successful registration of TCM in China and Europe. In the era of artificial intelligence and big data, the GP will be of the highest priority being able to integrate all available scientific information. Reproducibility of experiments is certainly the basis for any promotion of TCM. My goal is to strengthen interdisciplinary collaborations in TCM research ultimately to enhance the global impact of GP-TCM RA."



Now in 2025, important additional points will be to implement our research activities in applications in the area for both clinical use and TCM industrial needs. Consequently, we have extended our Interest group Regulatory Aspects, to "Regulatory Aspects and Industry". We will invite TCM industry to actively join our society. They should both contribute to and benefit from our society. In this year we will further explore the following fields:

- Establish the cooperation with ISO/TC 249.
- Cooperate with the World Federation of Chinese Medicine Societies (WFCMS).
- Promote integration with traditional Chinese ethnic medicine.
- Strengthen the cooperation with the Society for Medicinal Plant and Natural Product Research (GA)
- Strengthen the cooperation with European Scientific Cooperative on Phytotherapy (ESCOP) and the different societies for phytotherapy in EU.



It is now time for me to thank the past President Prof. Clara Bik-San Lau who has promoted GP-TCM RA to be successful organization. She promised to continue her support for the coming periods. I strongly believe that together with the newly elected BoD members, our Association will continue to grow from a promising teenager to a stable and active adult. Dear Society members and friends, your continuous support/guidance towards GP-TCM RA will be the key for the future continuous success!



**Mei Wang**



ii

**The eSeminar joint between the GP-TCM RA and the GA, titled “TCM in Europe – opportunities and challenges”, was held on 24 January 2025, 1:00pm – 3:00pm (CET), online via Zoom**



## **GA eSeminar “TCM in Europe – opportunities and challenges”**

**24 January, 2025, 1.00 PM – 3.00 PM (CET), online via Zoom**

Chairs:

Prof. Michael Heinrich, President of GA (UCL School of Pharmacy, London, UK)

Prof. Clara Lau, Past President of GP-TCM RA (Department of Pharmacology and Pharmacy & School of Chinese Medicine, The University of Hong Kong, Hong Kong SAR, China)

### **Program**

- 1:00 pm Welcome and brief introduction on GA  
Prof. Michael Heinrich, President of GA
- 1.10 pm Brief introduction on GP-TCM RA  
Prof. Clara Lau, Past President of GP-TCM RA
- 1.20 pm “TCM-drugs in the European Pharmacopeia: Where do we go from here and what can they be used for?” (20 min.)  
Prof. Rudolf Bauer, Institute of Pharmaceutical Sciences, University of Graz, Austria
- 1.45 pm “TCM in Europe and the Traditional Herbal Registrations (THRs): commercial development and uses” (20 min.)  
Dr. Mei Wang, Naturalis Biodiversity Center, Leiden, The Netherlands
- 2.10 pm “Adverse reactions to Chinese herbs: causes, prevention and action” (20 min.)  
Dr. Anthony Booker, University of Westminster / UCL School of Pharmacy, London, UK
- 2.35 pm Discussion
- 2.58 pm Closing remarks  
Prof. Clara Lau/Prof. Michael Heinrich

### *Full program of the eSeminar*



*Prof. Michael Heinrich introducing GA*



*Prof. Clara Lau introducing GP-TCM RA*



### iii The 13<sup>th</sup> GP-TCM RA Annual Meeting, Kew Garden, London



The 13<sup>th</sup> Annual Meeting of GP-TCM RA will be held on 24-27 July 2025 at Royal Botanic Gardens, Kew, United Kingdom. We would like to sincerely invite you all to join this 3.5-days meeting and to take this opportunity to meet old and new friends. Please see attached the meeting flyer. More details of the programme will be posted later.

In order to promote academic exchanges and research collaborations, we welcome you and your colleagues and students to submit abstracts to this Meeting to share your latest research findings. Please refer to the link below for the abstract submission form and kindly note the deadline for abstract submission will be on 25 April 2025.  
<https://www.gp-tcm.org/index.php/event/the-13th-gp-tcm-ra-annual-meeting/>

We would like to sincerely welcome you all to the coming 13<sup>th</sup> Annual Meeting of GP-TCM RA in Kew, UK.



*Mei Wang, President of GP-TCM RA*

*Simon Lee, Secretary-General of GP-TCM RA*



#### The 13<sup>th</sup> GP-TCM RA Annual Meeting (in association with FTCMP)

Royal Botanic Gardens  
**Kew**

**Topic: One health  
- potential for the integration of Chinese Medicine**  
at

**Royal Botanic Gardens, Kew, UK (24-27 July 2025)**

More details can be found later in GP-TCM RA website:

[www.gp-tcm.org](http://www.gp-tcm.org)

中医药规范研究学会第13届年会

英国伦敦皇家植物园邱园

2025年7月24-27日

详情稍后见学会官网: [www.gp-tcm.org](http://www.gp-tcm.org)



First announcement 会议第一轮通知





## *New members of GP-TCM RA (January-February 2025)*

### **Life Members**

**Wei LI**

National Defense Medical Center, Taipei

### **Ordinary Members**

**Lu FU**

China Academy of Chinese Medical Sciences, China

### **Student Member**

**Yongqi LI**

Huazhong University of Science and Technology, China

**Barun DAS GUPTA**

Jadavpur University, Kolkata, India







## Current Corporate Members

Dalian Fusheng Natural Medicine Development Co. Ltd., China	 大连富生天然药物开发有限公司 DALIAN FUSHENG NATURAL MEDICINE DEVELOPMENT CO., LTD.
Hutchison Whampoa Guangzhou Baiyunshan Chinese Medicine Co. Ltd., China	  广州白云山和记黄埔中药有限公司
Infinitus (China) Company Ltd., China	 INFINITUS 无限极
PuraPharm International (H.K.) Ltd., Hong Kong SAR, China	 PuraPharm
Shanghai Hutchison Pharmaceuticals, China	 Shanghai Hutchison Pharmaceuticals 上海和黄药业



## Current Institutional Members

Chengdu University of Traditional Chinese Medicine, China	
China Medical University, Taichung, Taiwan (Department of Chinese Pharmaceutical Sciences and Chinese Medicine Resources)	
Heilongjiang University of Chinese Medicine, China	
Hong Kong Baptist University, Hong Kong SAR, China (School of Chinese Medicine)	 香港浸會大學 HONG KONG BAPTIST UNIVERSITY
Shaanxi University of Technology	
The University of Hong Kong, Hong Kong SAR, China (Department of Pharmacology and Pharmacy, LKS Faculty of Medicine)	 <b>HKU Med</b> LKS Faculty of Medicine Department of Pharmacology & Pharmacy 香港大學藥理及藥劑學系
Zhejiang Chinese Medical University, China (School of Pharmaceutical Sciences)	
Zhengzhou University of Industrial Technology, China	

## **The School of Chinese Medicine, Hong Kong Baptist University Held the Seminar on Herb Polysaccharides and Intestinal Immunology**

香港浸會大學  
HONG KONG BAPTIST UNIVERSITY

中醫藥學院  
School of Chinese Medicine

NEWS

### **SCM Held the Seminar on Herb Polysaccharides and Intestinal Immunology**

21 December 2024



*Speakers, members of the Research Centre and guests share their insights.*



*The Seminar gathers over 400 participants joining in-person or online.*

SCM successfully organised the "Seminar on Herb Polysaccharides and Intestinal Immunology" on 21 December, attracting over 400 participants online and offline from academia, industry and healthcare sector. The event also marked the establishment of the Research Centre for Herb Polysaccharides and Intestinal Immunology ("Centre") at the University.

In the welcoming speech, Professor Li Min, Executive Associate Dean of SCM, emphasised the School's commitment to promote precision medicine, translational studies, and standardisation and globalisation of Chinese medicine. She highlighted that the new Centre will provide a new research platform for interdisciplinary collaboration and innovation in Chinese medicine, symbolising another important milestone in the School's development."

News and photo adapted from link below:

<https://scm.hkbu.edu.hk/en/news-and-events/news/2024/1221-SCM-Held-the-Seminar-on-Herb-Polysaccharides-and-Intestinal-Immunology.html>



## News from Hong Kong Baptist University, Academic exchange: Neurocomputational, electrophysiological, and artificial intelligence approaches to decode neurodegenerative diseases



香港浸會大學  
HONG KONG BAPTIST UNIVERSITY

中醫藥學院  
School of Chinese Medicine

NEWS

### Academic exchange: Neurocomputational, electrophysiological, and artificial intelligence approaches to decode neurodegenerative diseases

21 January 2025



*Dr. Gajendra Kumar, Assistant Professor (Research) at Brown University visited SCM*

On 14 January, Dr. Gajendra Kumar, Assistant Professor (Research) at Brown University, visited the School at the invitation of Dr. Wong Hoi-leong Xavier, Associate Professor from the Teaching and Research Division and delivered an insightful seminar titled, "Unlocking the Brain's Mysteries: Neurocomputational, Electrophysiological, and Artificial Intelligence Approaches to Decode Neurodegenerative Diseases." Focusing on the research of artificial intelligence and neurodegenerative diseases, Dr Kumar and his team have received several U.S. patents for their remarkable innovations.

In his seminar, Dr. Kumar introduced the innovative use of artificial intelligence and machine learning in diagnosing neurological disorders. His research team has developed an advanced platform that integrates facial expression analysis with electroencephalography (EEG) signals to assess the severity of depression and psychological symptoms in patients. This system boasts high accuracy, significantly reducing the time clinicians spend on data analysis. Professor Li Min, Executive Associate Dean of Chinese Medicine, raised the potential for collaboration between the platform and the Chinese medicine clinic at HKBU, which could be instrumental in evaluating the efficacy of Chinese medicine treatments.

News and photo adapted from link below:

<https://scm.hkbu.edu.hk/en/news-and-events/news/2025/0121-Academic-exchange--Neurocomputational,-electrophysiological,-and-artificial-intelligence-approaches-to-decode-neurodegenerative-diseases.html>



## Hong Kong Baptist University co-launches “Community Care Chinese Medicine Service” with Sino Group and Ng Teng Fong Charitable Foundation



香港浸會大學  
HONG KONG BAPTIST UNIVERSITY

中醫藥學院  
School of Chinese Medicine

NEWS

### HKBU co-launches “Community Care Chinese Medicine Service” with Sino Group and Ng Teng Fong Charitable Foundation

4 February 2025



*Professor Alexander Wai, President and Vice-Chancellor of HKBU (second right); Ms. Nikki Ng, Director of Philanthropy of Sino Group and Director of the Ng Teng Fong Charitable Foundation (second left); Professor Feng Sun, Director and Professor of Practice of the Clinical Division of SCM, HKBU (first right); and Professor Junjun Yang, Executive Associate Director and Professor of Practice of SCM, HKBU (first left)*

Sino Group, the Ng Teng Fong Charitable Foundation, and the School of Chinese Medicine at Hong Kong Baptist University (“HKBU”) are committed to the well-being of underprivileged members of the community and have launched the “Community Care Chinese Medicine Service” programme. This initiative offers free Chinese medicine consultations and essential medications to members of the Community Living Room, aligning with its goal of enhancing health and quality of life by providing convenient and holistic support.

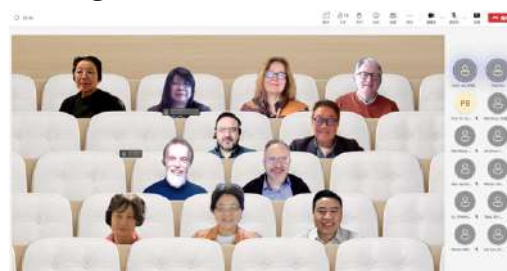
The “Community Care Chinese Medicine Service” was launched in mid-August 2024 at the Sham Shui Po and Hung Hom Community Living Rooms. The Chinese medicine team from the Clinical Division offers in-person consultations in the Community Living Rooms on a weekly basis, providing personalised health advice and Chinese medicine prescriptions tailored to each member's lifestyle, psychological condition, and body constitution. Medications are delivered directly to the Community Living Rooms so that members can collect them conveniently.

News and photo adapted from link below:

<https://scm.hkbu.edu.hk/en/news-and-events/news/2025/0204-HKBU-co-launches--Community-Care-Chinese-Medicine-Service--with-Sino-Group-and-Ng-Teng-Fong-Charitable-Foundation.html>

## **The 1<sup>st</sup> Honorary Advisory Board Meeting and Inaugural Forum of the King's Centre for Integrative Chinese Medicine (CICM) initiative 2.0 were held in London.**

The 1<sup>st</sup> Honorary Advisory Board Meeting and Inaugural Forum of the King's Centre for Integrative Chinese Medicine (CICM) initiative 2.0 were held in London. Chaired by Honorary Advisory Board Co-Chair Professor Clara Lau — on behalf of Honorary Advisory Board Chair Professor Yung-Chi Cheng — the first Honorary Advisory Board meeting of the King's CICM initiative 2.0 was held 9.00-11.30 UTC, 5<sup>th</sup> January 2025. Thirty Honorary Advisors (17 online and 14 on-site via Teams) gathered at the Denmark Hill Campus of King's College London or online. This closed-door meeting provided the opportunity to announce the establishment of the Board and served as a platform for the Board to be informed of the background, recent progress and future aspirations of the initiative, and served as a platform for the Board and King's CICM faculty members to brainstorm. This meeting, together with the Inaugural Forum held in the afternoon, marked the beginning of a new era of King's CICM.



*30 King's CICM Honorary Advisors attended the hybrid Honorary Advisory Board meeting*

The Inaugural Forum of the King's CICM initiative was co-hosted by King's College London and The UK Centre of Chinese Medicine (CCMUK). On 5 Jan. 2025, the inaugural forum of King's CICM titled "Integrative Chinese Medicine: An Innovative Approach to Clinical Innovation" was held in London. The event brought together leading international researchers, academics, and practitioners to discuss the convergence of Traditional Chinese Medicine (TCM) with modern scientific methodologies to address global health challenges. The hybrid meeting held on the Denmark Hill Campus of King's College London was attended by professionals from the UK, Europe, Asia and America, both in person and online. It provided a platform to explore cutting-edge research, foster collaboration, and chart a path forward for integrative Chinese medicine in clinical practice and research.

The forum opened with a session co-chaired by Dr Qihe Xu, Director of the King's CICM initiative 2.0, Board Member of GP-TCM RA and Chair of the UK Branch of the Consortium for Globalization of Chinese Medicine (CGCM), and Mr George He, Executive Director of CCMUK, King's CICM Honorary Advisor, Co-treasurer of GP-TCM RA and Co-Chair of CGCM-UK. Together, they set the stage by highlighting the importance of blending traditional medicine and bio-medicine practices to improve healthcare outcomes. Welcome remarks were delivered via video messages from King's College London and King's Health Partners. Dr. Xu and Mr. He then formally introduced the missions of King's CICM and CCMUK and their shared commitment to advancing integrative Chinese medicine through research, education and collaboration.



The forum featured three distinguished speakers, each presenting ground-breaking research and insights into the integration of Chinese and Western medicine:

**1. Professor Yung-Chi Cheng**, Chair of King's CICM Honorary Advisory Board; Chairman of CGCM; Henry Bronson Professor of Pharmacology, Yale University, USA.

**Topic:** "The Convergence of Conventional Western Medicine and Experience-Based Eastern Medicine (WE Medicine) for Unmet Health Needs"



2. **Professor Duolao Wang**, King's CICM Honorary Advisor; Chair in Biostatistics, Liverpool School of Tropical Medicine, Liverpool, UK.

**Topic:** "Statistical Insights for High-Impact Clinical Research Publications"

3. **Professor Jiangang Shen**, King's CICM Honorary Advisor; School of Chinese Medicine, State Key Laboratory of Pharmaceutical Biotechnology University of Hong Kong, China.

**Topic:** "TCM for Cardiovascular Diseases Treatment: From Case Report to Evidence-based Therapeutic Approach"



*Three keynote speakers: Prof. Yung-Chi Cheng, Prof. Duolao Wang and Prof. Jiangang Wan*

### Panel Discussion: Bridging Research and Practice

The forum concluded with a panel discussion moderated by Mr George He and Dr Sukvinder Kaur Bhamra (King's CICM Honorary Advisor, Senior Lecturer in Pharmacy. Clinical and Professional Practice, University of Kent, UK). Panellists included all keynote speakers and other honorary advisors of King's CICM. The discussion centred on two key questions: How can scientific evidence help TCM practice and improve patient care? How can TCM practitioners actively participate in and contribute to research? The audience engaged in a lively exchange of ideas with the panellists, addressing challenges such as integrating scientific research into clinical practice, improving the accessibility of research opportunities for TCM practitioners, and fostering collaboration between Eastern and Western medicine.



### Impact and Future Directions:

The inaugural forum was a significant milestone in the collaboration between King's CICM and CCMUK, laying a strong foundation for future initiatives aimed at integrating TCM with modern healthcare practices. By bringing together leading experts and fostering interdisciplinary dialogue, the forum highlighted the immense potential of integrative Chinese medicine to address unmet health needs, advance clinical innovation, and improve patient outcomes. Both King's CICM and CCMUK expressed their commitment to continuing their joint efforts in research, education and collaboration to promote the development and recognition of integrative Chinese medicine worldwide.

The forum video and highlights of the event can be accessed here:

<https://www.youtube.com/watch?v=1N9fdbFouLE>

<https://www.instagram.com/ukcentreofchinesemedicine/>

For more details about the King's CICM Initiative 2.0, please contact Dr Qihe Xu: [qihe.xu@kcl.ac.uk](mailto:qihe.xu@kcl.ac.uk). For more details about the CCMUK, please visit [www.ccmuk.org](http://www.ccmuk.org).





Science

Journal: *Journal of Pharmaceutical Analysis*

Detail:

<https://www.sciencedirect.com/science/article/pii/S2095177924002545>
DOI: <https://doi.org/10.1016/j.jpha.2024.101157>

Journal of Pharmaceutical Analysis

Available online 4 December 2024, 101157

In Press, Journal Pre-proof ? What's this?



Review paper

# The integration of machine learning into traditional Chinese medicine

Yanfeng Hong<sup>1,2</sup>✉, Sisi Zhu<sup>1,2</sup>✉, Yuhong Liu<sup>1,2</sup>✉, Chao Tian<sup>1,2</sup>✉,  
Hongquan Xu<sup>1,2</sup>✉, Gongxing Chen<sup>1,2</sup>✉, Lin Tao<sup>1,2</sup>✉, Tian Xie<sup>1,2</sup>✉

Show more ▾

☰ Outline | + Add to Mendeley | 🔗 Share | 🗒 Cite

<https://doi.org/10.1016/j.jpha.2024.101157>

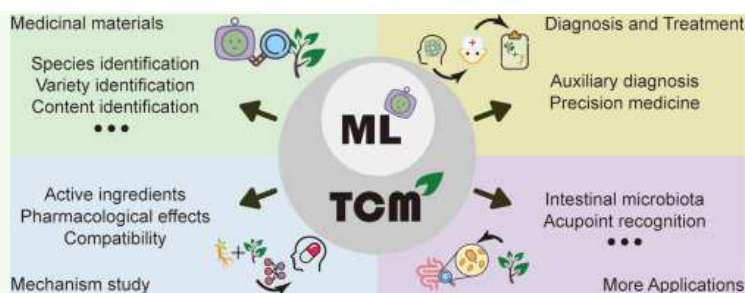
Get rights and content ➤

## Highlights

Summarized the current strategies of machine learning in the different applications of traditional Chinese medicine.

Discussed commonly used machine learning algorithms in traditional Chinese medicine.

Explored the application prospects of combining machine learning with traditional Chinese medicine data in clinical practices.



## Abstract

Traditional Chinese medicine (TCM) is an ancient medical system distinctive and effective in treating cancer, depression, coronavirus disease 2019 (COVID-19), and other diseases. However, the relatively abstract diagnostic methods of TCM lack objective measurement, and the complex mechanisms of action are difficult to comprehend, which hinders the application and internationalization of TCM. Recently, while breakthroughs have been made in utilizing methods such as network pharmacology and virtual screening for traditional Chinese medicine research, the rise of machine learning (ML) has significantly enhanced their integration with TCM. This article introduces representative methodological cases in quality control, mechanism research, diagnosis, and treatment processes of TCM, revealing the potential applications of ML technology in TCM. Furthermore, the challenges faced by ML in TCM applications are summarized, and future directions are discussed.



# 2025

## Aug. 19-21

### The 21<sup>st</sup> Meeting of CGCM

**Location/venue:**

**KING NARESUAN THE GREAT EXHIBITION AND CONVENTION CENTER  
NARESUAN UNIVERSITY, PHITSANULOK, THAILAND**

**Sponsor: Consortium for Globalization of Chinese Medicine**

**Organizer: Naresuan University, Phitsanulok, THAILAND**







**2025**  
**Aug. 31**  
**-Sept.3**

**73<sup>rd</sup> International Congress and Annual Meeting of the Society for Medicinal Plant and Natural Product Research(GA)**

**jointly with Società Italiana di Fitochimica (SIF)**



**73<sup>rd</sup> International Congress and Annual Meeting of the Society for Medicinal Plant and Natural Product Research (GA)**


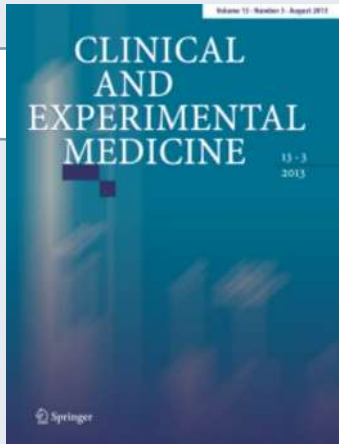
**jointly with Società Italiana di Fitochimica (SIF)**


**NAPLES**

**31<sup>st</sup> August – 3<sup>rd</sup> September 2025**



**Conference website: <http://www.ganaples2025.org/>**  
**E-mail: [secretariat@ganaples2025.org](mailto:secretariat@ganaples2025.org)**

<b>Topic</b>	<b>Leveraging Big Data Analytics for Advancing Precision Medicine in Inflammatory Diseases</b>	
<b>Deadline</b>	31 December 2025	
<b>Details</b>	<a href="https://link.springer.com/collections/jibhfbgeb">https://link.springer.com/collections/jibhfbgeb</a>	
 <b>Editor(s)</b>	<b>Hao Chi,</b> Clinical Medical College at Southwest Medical University, Luzhou, China <b>Ke Xu,</b> Chongqing University Affiliated People's Hospital <b>Guanhu Yang,</b> Beijing University of TCM and Ohio University	

<b>Topic</b>	<b>Reviews in Ethnopharmacology: 2025</b>	
<b>Deadline</b>	Manuscript Submission Deadline 07 April 2025	
<b>Details</b>	<a href="https://www.frontiersin.org/research-topics/67022/reviews-in-ethnopharmacology-2025">https://www.frontiersin.org/research-topics/67022/reviews-in-ethnopharmacology-2025</a>	
<b>Editor(s)</b>	<b>Irina Ielciu</b> University of Medicine and Pharmacy Iuliu Hatieganu, Cluj-Napoca, Romania <b>Rajeev K. Singla</b> Assistant Professor, West China Hospital, Sichuan University, Chengdu, China <b>Hanganu Daniela</b> Associate Professor, University of Medicine and Pharmacy Iuliu Hatieganu, Cluj-Napoca, Romania <b>Fabien Schultz</b> Neubrandenburg University of Applied Sciences, Neubrandenburg, Germany & School of Pharmacy, Faculty of Life Sciences, University College London, London, United Kingdom	

## i Shaanxi University of Chinese Medicine 2025 Recruitment Announcement



当前位置: 首页 > 人才招聘 > 招聘计划 > 正文

### 陕西中医药大学2025年招聘公告 (第二批)

来源: 人事处 作者: 人事处 点击数: 8497 发表时间: 2024-12-17 16:05:35

根据《事业单位人事管理条例》、《陕西省事业单位公开招聘工作人员实施办法》和《陕西中医药大学招聘工作实施办法》有关规定,结合本校发展需要,现面向全社会公开招聘人才,有关事项公告如下:

#### 一、招聘名额

专职教师岗位: 博士研究生 4人;

其他专业技术: 博士研究生 7人;

行政管理岗位: 博士研究生10人(详见附件)

For more information, please refer to the website below:

<http://rsc.sntcm.edu.cn/rczp/qjpg/111958.htm>





## Early Career Corner

### Visiting scholar and Master of Medicine program in Hubei University of Medicine (HBUM)

#### ● About HBUM

*Welcome to join Prof. Xuanbin WANG's lab*

Hubei University of Medicine, located at Shiyan in central China, is a medical school committed to nurturing healthcare professionals, integrating medicine with the disciplines of science, engineering and administration. Founded in 1965, the University has more than 120,000 alumni around the world. The university offers a wide range of programs across 18 schools covering more than 40 major areas of study. It has 1,027 full-time faculty, of whom 862 are master supervisors, 380 hold senior titles, and 215 hold doctoral degrees. It has an enrollment of 16,878 full-time undergraduate students, 1,665 postgraduate students, and 460 international students. It has the largest number of medical undergraduates in Hubei Province, and ranks Top 1 in undergraduate medical education among Hubei provincial-level universities.

The 6 affiliated hospitals are all Class A Tertiary Hospitals (the highest rating in China), with over 15,000 beds, 10 million out-patients, 0.5 million in-patients annually. Clinical Medicine is the top 3‰ in the global ESI ranking, while Pharmacology and Toxicology is the top 1%. The University has established close ties with over 30 universities and research institutions abroad in over 10 countries and regions, with program of student exchange, visiting scholars, expert lecturing, etc.

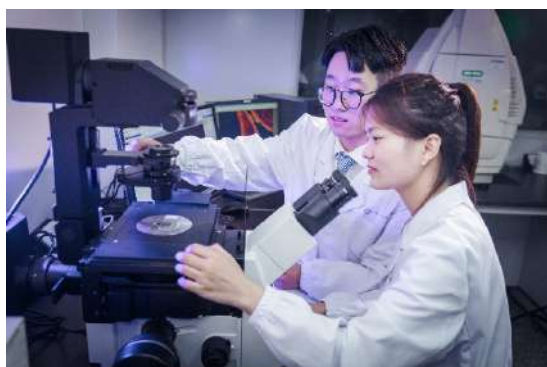


Hubei University of Medicine offers visiting research assistant (RA) and Master of Medicine (MM) programs for international students. A successful MM thesis should represent the result of the candidate's research which displays some originality and which demonstrates a sound understanding in the field of study and the appropriate research methods, and worthy of publication.

### ● About Prof. Xuanbin WANG's lab

Prof. Xuanbin WANG's lab, founded in 2007, focuses on Chinese medicines/natural products against diseases, especially cancers. He is also interested in Wudang Taoist folk medicine. Now, he has been granted more than 50 fundings from nation, province and university. He published 152 papers and wrote 12 books including 5 text books, such as Pharmacology of Chinese medicines (Chinese version and English version), Clinical Pharmacology (English version), Pharmacology (Chinese version), and Toxicology of Chinese Medicines (Chinese version).

To push the internationalization and modernization of Chinese medicine as well as Wudang folk medicine, Prof. Wang's group collaborate with experts from Germany, British, Belgium, Netherlands, Russia, Korea, Japan, Spain, and Austria.



### ● Scholarship and allowance

1,000 CNY per month allowance will be provided to RAs and MMs in Prof. WANG's group. RAs have priority opportunity to apply for MM as well as scholarship in the university.

### ● Admission requirement

Bachelor's degree of Medicine, Surgery, Pharmacy, Pharmacology, Traditional Chinese medicine, and related disciplines. Chinese Language Proficiency Test: HSK3.

### ● Research fields

Including but not limit in Pharmacy, Pharmacology, Chinese medicines and Wudang Taoist folk medicine.



### Enquiries

School of International Education, HBUM  
Address: 30 South Renmin Road, Shiyang, Hubei Province, China.  
Website: <https://www.hbmu.edu.cn>

Tel/Fax: +86-719-8895160  
Email: [admission@hbmu.edu.cn](mailto:admission@hbmu.edu.cn)





## ii Recruitment | Full-time Postdoctoral Recruitment at Fuyang Research Institute, Zhejiang University of Traditional Chinese Medicine, China

### 单位简介

浙江中医药大学富阳研究院（以下简称“研究院”）成立于 2023 年 9 月 28 日，是杭州市富阳区人民政府与浙江中医药大学合作共建的独立法人事业单位。研究院致力于现代中医药科技创新和成果转化，旨在推动富阳区经济高质量发展和浙江中医药大学“双一流”学科建设，打造“高能级、全球化、高辨识度”的现代中医药产业创新高能级平台。

浙江中医药大学富阳研究院博士后工作站于 2024 年 7 月批准成立，现面向社会公开招聘全职博士后研究人员，诚邀广大优秀青年人才加盟！

### 团队介绍

- 赵国屏，分子微生物学家，中国科学院院士、发展中国家科学院院士。研究领域涉及分子微生物学、基因组学、系统与合成生物学以及生物信息学等，长期从事微生物生理生化、代谢调控及酶作用机理的研究。组建并领导中国科学院合成生物学重点实验室，在天然化合物人工细胞工厂合成、单染色体酵母构建与 CRISPR-Dx 体系创建方面做出基础性贡献。在 Nature、Science、PNAS、Nature Genetics、Science Bulletin 等杂志发表 SCI 论文 50 余篇。
- Thomas Efferth，博士、教授，欧洲科学院院士、发展中国家科学院院士、香港中文大学名誉教授、香港浸会大学名誉教授、浙江中医药大学名誉教授等。现任德国美因茨大学药学生物学系主任。长期致力于利用药物基因组学和生物信息学方法，揭示天然产物及合成化合物药理毒理以及抑制耐药肿瘤的作用机制研究。在 Trends Mol Med、Blood、Pharmacol Therapeut、Cancer Res 等杂志发表研究论文 660 余篇，总引用率超 30000 余次。曾获中华中医药学会岐黄国际奖等奖项。

### 团队研究聚焦：

- （一）基于中药有效单体或组分配伍的新药研究与开发；
- （二）基于多组学和临床大数据技术的中医病机研究；
- （三）基于大数据与人工智能技术的中药机制研究。

## Enquiries



Please refer to the link below for more information:  
<https://mp.weixin.qq.com/s/4ZP25vAeL-SRNey3JQC1IA>





## Postgraduate opportunities in Europe

Europe offers a wealth of postgraduate opportunities, known for their high-quality education, diverse research programs, and numerous funding options. Many European countries provide international students with affordable or even free education, along with a multicultural environment that fosters innovation and collaboration.

### 1. PhD in Plant-Based Alternative Protein Sources at Ulster University, UK

- **Description:** This project focuses on measuring the impact of whole plant-based alternative protein sources on gut health and metabolic function. It involves research on aquatic plants like duckweed as potential sources of alternative proteins.
- **Requirements:** Bachelor's or Master's degree in a relevant field, strong background in plant sciences, nutrition, or related disciplines.
- **Application Deadline:** February 24<sup>th</sup>, 2025.
- **Contact Information:** Apply by February 24<sup>th</sup>, 2025. For more details, visit the Ulster University website @ <https://www.ulster.ac.uk/doctoralcollege/find-a-phd/3b-biomedical-sciences/>



### 2. PhD in Molecular Mechanics of Plant Ion Channels at University of Glasgow, UK

- **Description:** This project aims to understand the molecular mechanics of clustering and gating in plant ion channels, which are crucial for their activity in eukaryotic membranes.
- **Requirements:** Bachelor's or Master's degree in a relevant field, strong background in molecular biology, biochemistry, or related disciplines.
- **Application Deadline:** Open until filled.
- **Contact Information:** Applications are accepted year-round. For more details, visit the University of Glasgow website @ <https://www.gla.ac.uk/postgraduate/research/plantscience/>





## Online tools for finding a PhD program around the world



The following are PhD searching platforms designed to assist prospective PhD students in finding and applying for doctoral programs. These platforms not only list PhD opportunities but also offer valuable tips on the application process, funding options, and life as a PhD student. You can refine your search with filters for country, subject (ex. Herbal medicine, Pharmacology, ...), and institution to find programs that best match your interests. Good luck with your search!

- FindAPhD : <https://www.findaphd.com/>
- PhD Portal : <https://www.phdportal.com/>
- Academic Positions : <https://academicpositions.com/jobs/position/phd>
- ScholarshipDb.net : <https://scholarshipdb.net/>



*Good luck with your search!*

**Networking** is a crucial aspect for researchers. Here are the top networking sites widely used in the scientific community abroad. Enjoy connecting with new people!

- LinkedIn : <https://linkedin.com/>

To make the most of LinkedIn, start by creating an engaging profile that showcases your professional/academic achievements. Regularly update your connections with your latest scientific breakthroughs to keep them informed of your progress. If you don't know where to start, follow these pages that repost PhD and post-doctoral position openings.

- jobRxiv
- Jobs4Biotech : Mainly posts research opportunities in France.

- Research Gate : <https://www.researchgate.net/>
- Academia.edu : <https://www.academia.edu/>
- ORCID : <https://orcid.org/>



# Postgraduate Opportunities

## Opportunities in Europe

### Belgium

PhD Study in Belgium – A Guide for 2024 | FindAPhD.com is a guide to understand the PhD in Belgium and to find one.

<https://www.findaphd.com/guides/phd-study-in-belgium>

161 PhD jobs in Belgium - Academic Positions is to find PhD opportunities in Belgium.

<https://academicpositions.com/jobs/position/phd/country/belgium>

University of Mons (UMONS) : Select a PhD/Post-Doc topic - Université de Mons (umons.ac.be) is to find a PhD or a Post-Doc in UMONS.

- The ProtMic Research Group is hiring a full-time post-doc in the field of renewable sources of plant biostimulation and the cyanobacteria

<https://web.umons.ac.be/en/recherche/le-doctorat/search-a-thesis-topic/>

### Opportunities at the De Duve Institute :

<https://www.deduveinstitute.be/fr/jobs>

Professor Zhu Jingjing's lab which focuses on pioneering advancements in tumor immunotherapy, including novel targets, improved delivery methods, and uncovering resistance mechanisms is looking for

- 1 PhD student and 1 Post-doctoral student in immunity and cancer (4 years)
- 1 Bioinformatician (3 years)
- Professor Tyteca Donatienne's lab which studies how plasma membrane lipid distribution and biophysical properties control cell deformation in physiology and pathology is looking for
- 1 Post-doctoral student in Mechanobiology in Cancer
- Professor Charles De Smet's lab which studies the consequences and causes of genetic alterations in cancer is looking for
- 1 PhD student and 1 Postdoctoral student in Epigenetics and Proteomics.



### France

PhD in France - Subjects (PhD, Master's & Postdoc training) (campusfrance.org) is to find a PhD in France

<https://doctorat.campusfrance.org/en/phd/offers>

### Switzerland

52 Postdoc jobs in Switzerland - Academic Positions

<https://academicpositions.com/jobs/position/post-doc/country/switzerland>



**The ProtMic Research Group at University of Mons  
is looking for a full-time post-doc in the field of  
renewable sources of plant biostimulation and the cyanobacteria.**

The PostDoc researcher will be part of an academic-research centres-industrial consortium working on a portfolio of PHENIX\_Biocontrol projects aimed at developing new biostimulants or control agents. ProtMic's contribution will be to characterise the associated microbiomes using metaproteomic and metagenomic approaches, and to study and develop bioactive combinations between polysaccharides from microalgae and other types of biostimulants.

● **Profile and requirements**

1. You hold a PhD degree in biology, biochemistry, bioscience engineering, agronomy or agricultural engineering, (bio)chemical engineering, or equivalent applied sciences.
2. You have demonstrable experience in plant biology and microbiology. Having an experience with analytical methods is a plus.
3. You have co-authored papers in which quantitative sustainability assessments have been performed.
4. You have an experience in working on plant biostimulation. Candidates with a background in and focus on technology transitions in sustainable agri-food chains and agrotechnology is appreciated.
5. You are the first author of papers published in journals indexed by Web of Science.
6. You have outstanding oral and written communication skills in English.
7. You have excellent interpersonal skills to collaborate constructively and respectfully with scientific team members and with BSc/MSc students.
8. Your research qualities are in line with the faculty and university research policies.

● **We offer**



1. A post-doctoral scholarship for a period of one year, with the possibility of renewal (2 times) after positive evaluation.
2. The planned start date is October 1<sup>st</sup>, 2024, or as soon as possible.
3. You will do most of your work at the sciences campus in a stimulating and flexible working environment, encouraging creativity and independent thinking, in a dynamic, and international setting.
4. The opportunity to build a broad national and international network of industrial and scientific partners, and to develop new personal competencies through professional training moments, courses and workshops;
5. The possibility to tutor and co-supervise BSc, MSc and PhD students working on your research topic, and engage with colleague researchers in joint research and publication efforts.
6. The chance to make a difference, and personally contribute to answer to urgent societal challenges.

Interested in this vacancy ? Please send your motivational letter and your CV at Ruddy. Wattiez@umons.ac.be by August 30.

**Save the dates:**

Interviews will take place in two rounds, with a first short interview on 30 August 2024 (morning, CET), ideally in person, but remote attendance can be accommodated, and successful applicants will be invited for an in-depth second interview on 17 September 2024 (morning, CET), on site.



## Freely Accessible Learning Material

### Interesting articles

An Introduction to Statistics: Choosing the Correct Statistical Test (ijccm.org) :

This article provides a comprehensive overview of the myriad factors that influence the choice of a statistical test and identifies several statistical tests that are commonly utilized in practical application.?

- <https://www.ijccm.org/doi/pdf/10.5005/jp-journals-10071-23815>

How Can Early Career Researchers Be More Involved With Scientific Societies?

- <https://www.enago.com/academy/how-can-early-career-researchers-be-more-involved-with-scientific-societies/>

Writing a scientific article: A step-by-step guide for beginners - ScienceDirect:  
A guide for beginner to write a scientific article

- <https://www.sciencedirect.com/science/article/abs/pii/S1878764915001606>

What every new reviewer should know about peer review: workshop hosted by the SAJS

- <https://www.assaf.org.za/wp-content/uploads/2024/09/3-What-every-new-reviewer-should-know-about-peer-review.pdf>

## Freely Accessible Learning Material

### Online learning Platforms

**Functional Metabolomics Lab - YouTube : YouTube channel that upload summer schools, seminars and workshops on Metabolomics**

- <https://www.youtube.com/@functionalmetabolomics/videos>

**(Galaxy Training! (galaxyproject.org)) : A platform designed for on-site education and training in bioinformatics, omics, and other related areas is available.**

Link to Galaxy ([usegalaxy.eu](https://usegalaxy.eu)) which is a scientific workflow, data integration, and persistence and publishing platform for computational biology. It aims to provide research scientists who do not have programming experience with access to computational biology. The platform offers a multi-omics treatment solution.





# Freely Accessible Learning Material

## Online learning Platforms

### AI tips and tools



Mushtaq Bilal, PhD (@MushtaqBilalPhD) / X (twitter.com) : AI tips, tutorials and tools to simplify the academic writing process.

- <https://twitter.com/MushtaqBilalPhD>

Ilya Shabanov (@Artifexx) / X (twitter.com) : The Effortless Academic: Tools, Note-Taking Strategies and AI tutorials for the modern academic.

- <https://twitter.com/artifexx>

Asad Naveed (@dr\_asadnaveed) / X : Posts on research, academia & AI.

- [https://x.com/dr\\_asadnaveed](https://x.com/dr_asadnaveed)

Dissertation Writing Service | Dissertation Coach (@drfred\_phd) / X ([twitter.com](https://twitter.com/drfred_phd)) : Provides personalized help for research proposal, article and thesis writing and posts relatable memes on PhD life.

Razia Aliani (@RaziaAliani) / X : Tests AI tools and shares insights.

- <https://x.com/RaziaAlia>

### Useful tools/databases for natural products datamining

These tools and databases can help researchers in various aspects of natural products research, including identifying active compounds, predicting activities, and visualizing pathways. Here are some primary use cases for each tool:

#### COCONUT 2.0 - Welcome - COCONUT

- Enables visualization of known stereochemical variants
- Provides references to the articles describing the compound

##### Reference:

Venkata Chandrasekhar, Kohulan Rajan, Sri Ram Sagar Kanakam, Nisha Sharma, Viktor Weißenborn, Jonas Schaub, Christoph Steinbeck, COCONUT 2.0: a comprehensive overhaul and curation of the collection of open natural products database, *Nucleic Acids Research*, 2024;, gkae1063,

<https://doi.org/10.1093/nar/gkae1063>





## Useful tools/databases for natural products datamining

### KNAPSAck

- Identify biomarkers associated with a pathology
- Locate species on the world map
- Find compounds described in a species
- Identify structures similar to the searched compound (TWINS)
- Identify the source species of a compound + the organ containing it
- Search for all compounds with a specific activity

#### Reference:

Kensuke Nakamura, Naoki Shimura, Yuuki Otabe, Aki Hirai-Morita, Yukiko Nakamura, Naoaki Ono, Md Altaf Ul-Amin, Shigehiko Kanaya, KNAPSAck-3D: A Three-Dimensional Structure Database of Plant Metabolites, *Plant and Cell Physiology*, Volume 54, Issue 2, February 2013, Page e4

<https://doi.org/10.1093/pcp/pcs186>

### NP-MRD - NP-MRD

- Access NMR spectra
- Find compounds described in a species
- Convert NMR files from one format to another

#### Reference:

David S Wishart, Tanvir Sajed, Matthew Pin, Ella F Poynton, Bharat Goel, Brian L Lee, An Chi Guo, Sukanta Saha, Zinat Sayeeda, Scott Han, Mark Berjanskii, Harrison Peters, Eponine Oler, Vasuk Gautam, Tamara Jordan, Jonghyeok Kim, Benjamin Ledingham, Zachary M Tretter, James T Koller, Hailey A Shreffler, Lillian R Stillwell, Amy M Jystad, Niranjana Govind, Jessica L Bade, Lloyd W Sumner, Roger G Linington, John R Cort, The Natural Products Magnetic Resonance Database (NP-MRD) for 2025, *Nucleic Acids Research*, 2024, gkae1067

<https://doi.org/10.1093/nar/gkae1067>

## Useful tools/databases for natural products datamining



Attending international conferences is an excellent opportunity to network with fellow researchers, share your work, and stay updated on the latest advancements in your field. These conferences can also lead to new collaborations and career opportunities.

Top 43123 Conferences. Conference Alerts 2024-2025, Conference 2024-2025, Conferences 2024-2025 (worldconferencealerts.com)

- <https://www.worldconferencealerts.com/>

2024 Conference Main (acupunctureresearch.org)

- <https://www.acupunctureresearch.org/conference>

Home | Meghaz Meetings

- <https://www.meghazmeetings.com/iestam-2024/>

Traditional Chinese Medicine Conferences 2024/2025/2026 (conferenceindex.org)

- <https://conferenceindex.org/conferences/traditional-chinese-medicine>



## Apply for a grant in Europe

i

ERC starting grant : is for early-career scientists with 2-7 years of experience after completion of PhD.

More information at



Details: <https://erc.europa.eu/apply-grant/starting-grant>



ii

Marie Skłodowska-Curie Actions : supported by the European Commission, MSCA proposes various fellowships to support research and innovation through the development of human resources.

More information at



Details: <https://marie-sklodowska-curie-actions.ec.europa.eu/>

iii

Euraxess – Belgium : Where you can find different funding opportunities for doctoral, post-doctoral, early career or internship in Belgium.

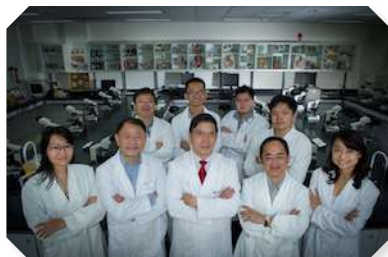
More information at



Details: <https://www.euraxess.be/belgium/jobs-funding>



i



Doctor of Philosophy (PhD) in Biomedical Sciences/ Chinese Medicine/ Translational Medicine/ Pharmacy in Chinese Medicine  
School of Chinese Medicine, Hong Kong Baptist University

Details: <https://scm.hkbu.edu.hk/en/education/research-postgraduate.html>



香港中文大學中醫學院

School of Chinese Medicine  
The Chinese University of Hong Kong

ii



PhD in Chinese Medicine  
School of Chinese Medicine,  
The Chinese University of Hong Kong

Details: <http://www.scm.cuhk.edu.hk/en-gb/programs/research-master-doctoral-program/phd-in-chinese-medicine>



澳門大學  
UNIVERSIDADE DE MACAU  
UNIVERSITY OF MACAU



中藥質量研究國家重點實驗室(澳門大學)  
Laboratório de Referência do Estado para Investigação de  
Qualidade em Medicina Chinesa (Universidade de Macau)  
State Key Laboratory of Quality Research in Chinese Medicine  
(University of Macau)

中華醫藥研究院  
Instituto de Ciências Médicas Chinesas  
Institute of Chinese Medical Sciences

iii



Doctor of Philosophy in Biomedical Sciences  
Institute of Chinese Medical Sciences, University of Macau

Details: <https://sklqrcm.um.edu.mo/ycmdbs/>



LKS Faculty of Medicine  
The University of Hong Kong  
香港大學李嘉誠醫學院



中醫藥學院

iv



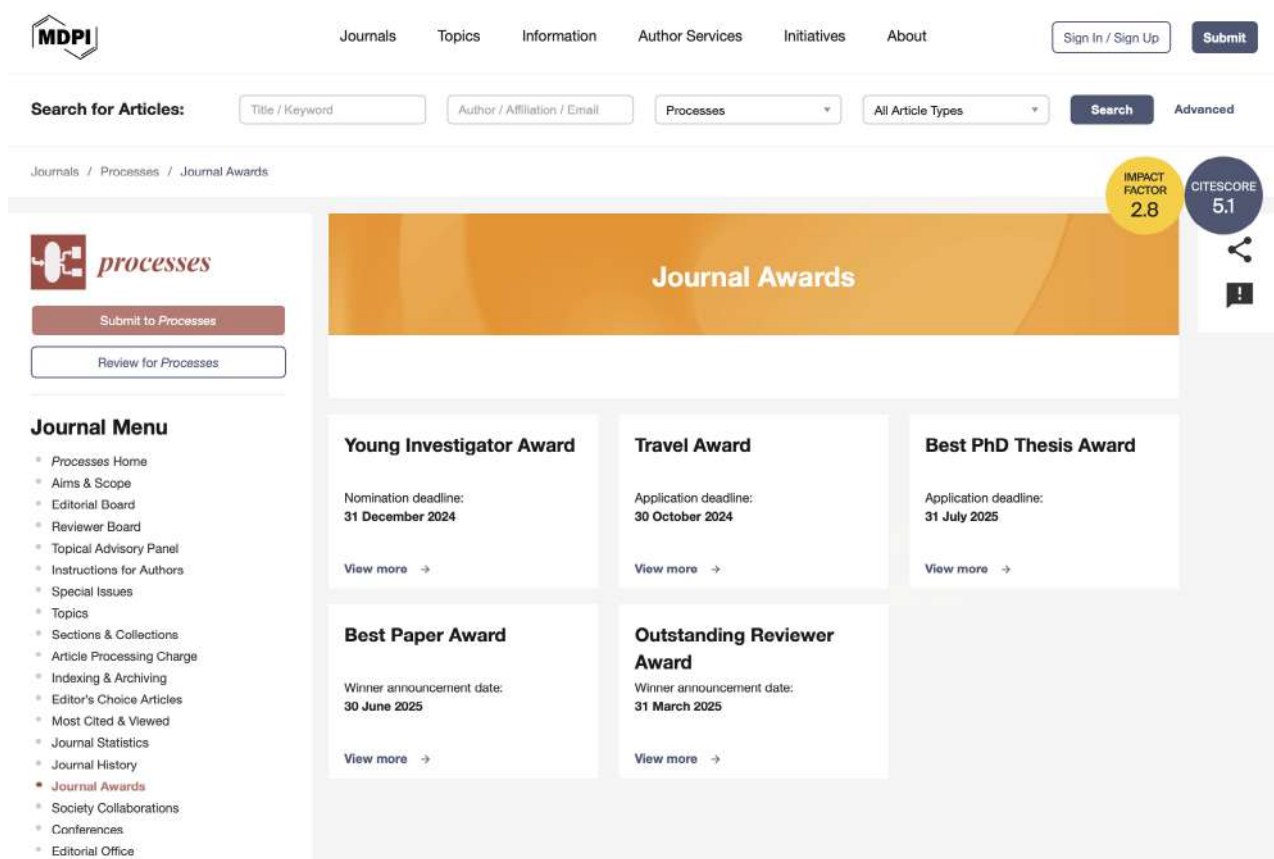
PhD in Chinese Medicine  
School of Chinese Medicine, The University of Hong Kong

Details: <https://scm.hku.hk/Views/Programme/English-MPhilPhD.html>



Journal Award by *Processes*

 More information: <https://www.mdpi.com/journal/processes/awards>



The screenshot displays the MDPI Processes Journal Awards page. At the top, the MDPI logo is on the left, and navigation links for Journals, Topics, Information, Author Services, Initiatives, and About are in the center. On the right, there are links for Sign In / Sign Up and Submit. Below the navigation bar is a search section with fields for Title / Keyword, Author / Affiliation / Email, Processes (a dropdown menu), and All Article Types (a dropdown menu), followed by a Search button and an Advanced link. The main content area has a breadcrumb trail: Journals / Processes / Journal Awards. On the left side of the main content area, there is a sidebar with the Processes logo, a Submit to Processes button, a Review for Processes button, and a Journal Menu. The Journal Menu includes links to Processes Home, Aims & Scope, Editorial Board, Reviewer Board, Topical Advisory Panel, Instructions for Authors, Special Issues, Topics, Sections & Collections, Article Processing Charge, Indexing & Archiving, Editor's Choice Articles, Most Cited & Viewed, Journal Statistics, Journal History, Journal Awards (highlighted), Society Collaborations, Conferences, and Editorial Office. The main content area features a large orange banner with the text "Journal Awards". To the right of the banner, there are two circular badges: one for Impact Factor 2.8 and another for CiteScore 5.1. Below the banner, there are five award categories, each with a nomination or application deadline and a "View more" link: Young Investigator Award (Nomination deadline: 31 December 2024), Travel Award (Application deadline: 30 October 2024), Best PhD Thesis Award (Application deadline: 31 July 2025), Best Paper Award (Winner announcement date: 30 June 2025), and Outstanding Reviewer Award (Winner announcement date: 31 March 2025).



## Bi-monthly meme



We include this section to add a bit of fun and relatability to the newsletter, helping to bring a light-hearted touch to our academic and professional content.



AND THE WINNER FOR THE LAST BI-MONTHLY MEME IS...

**My bacterial cultures as soon as I forget to add antibiotic to the growth medium:**

MEME 1



3 cups of coffee after 2 hours sleep feel like

MEME 2



Vote right now for the next "Bi-monthly meme" here

<https://strawpoll.com/Dwyo3brz0yA> :



Which one is your favourite?

when you bind highly to taste receptors indicating a high concentration of sugar but actually provide almost no energy

MEME 3



## Med Plant Hunt with iNaturalist

i



In order to promote conservation of wildlife, especially wild medicinal plant and TCM herbs, and their environment, a challenge on **"Med Plant Hunt"** is launched.

The aim of challenge is to encourage our members to identify and recognize the morphological features of living wild medicinal plant in nature.

### Eligibility:

Med Plant Hunt is free and open to all GP-TCM RA members.

Entries must abide by the guidelines below.

### Rules & Guidelines:

iNaturalist is a nature app to help you identify the animals and plants around you and provide a platform to connect you and experts to share about nature. Users can record and share their observations and the findings can enrich scientific data repositories like the Global Biodiversity Information Facility.

Create your own account and share your wild medicinal plant observation to mobile iNaturalist app or iNaturalist website.

### How to enter:

1. Complete the registration form with iNaturalist user ID.
2. Make the observation of living wild medicinal plant around you with iNaturalist app/website.
3. With the submitted iNaturalist ID, your observation for entry will be automatically recorded and results will be announced in the coming issue of the newsletter.



How to join



Registration form



How to upload

For inquiries about Med Plant Hunt, please send email to

[gptcm\\_medplanthunt@outlook.com](mailto:gptcm_medplanthunt@outlook.com)



## Med Plant Hunt with iNaturalist

i



### Prizes:

- **Adventurous Observer:** The highest number of observed species
- **TCM Photographer:** Best photo shoot
- **Lucky Observer:** Observe rare species



The selected entries will be published on the next issue of the newsletter. An electronic certificate and a **complementary gift** (e.g. water bottle ideal for outdoor activities, sponsored by Macau Pharmacology Association) will be given.



澳門藥理協會

# MED PLANT HUNT

*With iNaturalist*

## Med Plant Hunt Registration Form

Name:

Email:

Affiliation:

Country or region:

### iNaturalist account information

User name:

User email:

(Please send the form to [gptcm\\_medplanthunt@outlook.com](mailto:gptcm_medplanthunt@outlook.com) for registration)



Online registration



How to join



Registration form



How to upload



Ivy morning-glory (*Pharbitis nil*, Convolvulaceae, 裂叶牵牛, left) and purple morning-glory (*Pharbitis purpurea*, Convolvulaceae, 圆叶牵牛, right)



Official in Chinese pharmacopoeia, the dried ripe seed of Ivy morning-glory (*Pharbitis nil*) or purple morning-glory (*Pharbitis purpurea*) is known as the Chinese medicinal *qianniuzi* (pharbitidis semen). It is a bitter and cold Chinese medicinal that drastically drives out water through the urethra and anus, removes stagnation, and expels parasites. It is indicated for edema, ascites, cough and wheezing due to fluid retention, constipation due to damp-heat or food stagnation in the stomach and intestines, and abdominal pain due to parasitic infections.

Pharbitidis semen contains such toxic constituents as pharbitin and ergot alkaloids.

Improper ingestion may induce hallucination, restlessness, and vomiting. Renal impairment may occur in long term use.

Attention should be paid that *Pharbitis nil* is now treated as a synonym of *Ipomoea nil*, and *Pharbitis purpurea* a synonym of *Ipomoea purpurea* according to <https://www.iplant.cn/> and <https://powo.science.kew.org/>.

Note: *q.v.* also Asian/American pokeweed, Chinese Materia Medica Highlights of <https://www.gp-tcm.org/index.php/2023/12/31/gp-tcm-ra-november-december-2023-newsletter/>

## 裂叶牵牛

细长茎绕叶如心  
花艳天蓝裂片深  
墙面栅栏时遇见  
消痰泻水有余音

## 圆叶牵牛

宅旁偶遇或田边  
叶片心形无裂缘  
花丽入园来点缀  
服之利水疾能痊

The above colour photographs, English texts and Chinese poems are contributed by Prof **Hubiao Chen** (Hong Kong), Dr **Ping Guo** (Hong Kong) and Prof **Jiqing Liu** (Shenzhen), respectively. This column is advised by Prof **Zhongzhen Zhao** (Hong Kong).



Just click here to enjoy the video:

[https://uofmacau-my.sharepoint.com/:v/g/personal/yc37514\\_um\\_edu\\_mo/EdgxwXAl9\\_pOuQSI3InHfEtUB1K6mWUfqotyYRtjkuA47GA?nav=eyJyZWZlcmlhbnElbm80OnciscVmZlYXNwb3RhdCI9PmVmcmZlc2Uuc2VkIjE2LzUuc2N1aWlicmVmZlYXNwb3RhdGQGF02m9ybS6ilidllnslj2mVmcW9kSW93Ji6luzgZxcClCjZlZWZlcmlhbnFZpCjoiOiNEUmZpbG9TGluaUNoYXNjaXkiOiFOeD8=&isDuple](https://uofmacau-my.sharepoint.com/:v/g/personal/yc37514_um_edu_mo/EdgxwXAl9_pOuQSI3InHfEtUB1K6mWUfqotyYRtjkuA47GA?nav=eyJyZWZlcmlhbnElbm80OnciscVmZlYXNwb3RhdCI9PmVmcmZlc2Uuc2VkIjE2LzUuc2N1aWlicmVmZlYXNwb3RhdGQGF02m9ybS6ilidllnslj2mVmcW9kSW93Ji6luzgZxcClCjZlZWZlcmlhbnFZpCjoiOiNEUmZpbG9TGluaUNoYXNjaXkiOiFOeD8=&isDuple)





Ivy morning-glory (*Pharbitis nil*, Convolvulaceae, 裂叶牵牛, left) and purple morning-glory (*Pharbitis purpurea*, Convolvulaceae, 圆叶牵牛, right)



## The January-February 2025 Newsletter of GP-TCM Research Association



Just click here to enjoy the video:

[https://uofmacau-my.sharepoint.com/:v/g/personal/yc37514\\_um\\_edu\\_mo/EdgwxwA1\\_9\\_pQuQSI3InHtU81kM6wUfqotyYRtikuA47GA?nav=eyJyZWZlcjhhbEluZm8lQnsicmVmZXlyYWxBCHAIQjJPhmVEcmI2ZUZyck1c2luZXNzliwicmVmZXlyYWxBCHBQbGF0Zm9ybS6lIjQlYislnJmVycmFsTW9kZSI6InZpZ2ciClJpZWZlcjhhbFZpZ2ciOjJNeUZpbGZvTGlua0NvcHkiX0&e=Du5PlE](https://uofmacau-my.sharepoint.com/:v/g/personal/yc37514_um_edu_mo/EdgwxwA1_9_pQuQSI3InHtU81kM6wUfqotyYRtikuA47GA?nav=eyJyZWZlcjhhbEluZm8lQnsicmVmZXlyYWxBCHAIQjJPhmVEcmI2ZUZyck1c2luZXNzliwicmVmZXlyYWxBCHBQbGF0Zm9ybS6lIjQlYislnJmVycmFsTW9kZSI6InZpZ2ciClJpZWZlcjhhbFZpZ2ciOjJNeUZpbGZvTGlua0NvcHkiX0&e=Du5PlE)

