

The April-June 2015 Newsletter of The GP-TCM Research Association



Editorial

GP-TCM & GP-TCM RA: Towards a New Generation of Global Health Care

Prof. Dr. Jan van der Greef, Honorary Member, the GP-TCM RA
Director, Sino-Dutch Center for Personalized and Preventive Medicine, The Netherlands
Professor of Analytical BioSciences, University of Leiden, The Netherlands
Principal Scientist, TNO, The Netherlands
CEO, SU BioMedicine, The Netherlands
E-mail: jan.vandergreef@tno.nl

In recent decades, system thinking is growing in Western sciences and by combining theories from a variety of disciplines, an expanded systems view of life is developing. Man is seen from this perspective as a highly complex organism, a dynamic ecosystem consisting of innumerable embedded systems that interact with one another, creating emerging properties and synergetic effects. This creates a unique opportunity to build a bridge between Western and Chinese medicine, using a systems biology approach.

TCM has gained an immense understanding of holistic systems, and applies that wisdom in a top-down manner to elucidate humanity's understanding of the web of life. The bottom-up approach practised in Western biomedical sciences has produced a tremendous amount of specialized knowledge about anatomy, physiology, cells, genes, and biochemistry. Considering the focus of TCM on prevention and health promotion, while Western medicine has developed strongly for acute disease states, it becomes clear that these two complementary worldviews meet and integration of the two has a great potential for improving Global Health Care.



A critical success factor for integration of the two worldviews is a common language and understanding of biology and in particular unification of diagnosis, based on the understanding of collections and arrangements of symptoms and signs. System diagnosis research becomes key and an essential step to enable the evaluation of system interventions. Western diagnostics could benefit greatly from the integration of broader knowledge about relationships between symptoms, including consideration of TCM descriptions of syndromes. It will open the doors to improved phenotyping.

Furthermore integration of Western and Chinese medicine thinking has an enormous potential for integration of modern technological and social innovation. Although perceived as distinct paradigms today, they are poised to merge in the arena of personalized systems medicine, wherein patients can take a greater role in managing their own health and wellness. Human-human relationships are critical for diagnosis and intervention in a biopsychosocial context. In fact, it will drive the current shift from disease management to health promotion that is an unmet need in healthcare systems worldwide.

The GP-TCM RA has all the elements under its umbrella to drive this important scientific research process and from a systems perspective we know that connections are more important than the individual objects, so I wish the GP-TCM RA every success in the many endeavors to generate collaborative efforts in improving Global Health Care!

The April-June 2015 Newsletter of The GP-TCM Research Association



Breaking news!

Russia Traditional Chinese Medicine Legislation and Development Forum held at Beijing University of Chinese Medicine (5 June 2015)

To serve China's "One Belt and One Road" initiative, Beijing University of Chinese Medicine hosted a forum for in-depth understanding of the current status of medical infrastructure in Russia, legislation of Chinese medicine in Russia and promotion of health services for the people of Russia. Among the keynote speakers and guests of honour were Chairman of the Russian Federation State Duma Healthcare Committee, Mr. Kalashnikov Sergei Vyacheslavovich, Chairman of Traditional Medicine Association, Mr. Egorov Vladimir Vladimirovich and senior officials from China's Ministry of Education, State Administration of TCM, China Food and Drug Administration, China Academy of Chinese Medical Sciences and 12 domestic colleges and universities of Chinese medicine. More details will follow in June-July edition of this Newsletter.

俄罗斯中医药立法与发展高峰论坛于6月5日在北京中医药大学举行。此次论坛秉承服务国家“一带一路”建设，深入了解俄罗斯医疗现状，推动中医药在俄罗斯的立法和推广，为俄罗斯民众健康服务的精神，邀请了俄罗斯国家杜马医学委员会主席谢尔盖·维切斯拉维奇·卡拉什尼科夫、传统医学协会主席弗拉基米尔·弗拉基米洛维奇·伊格洛夫以及我国国家教育部、国家中医药管理局、国家食品药品监督管理总局、中国中医科学院领导及国内12所中医药高校的领导参加。



http://mp.weixin.qq.com/s?__biz=MzA4MDMwNTY3MQ==&mid=207226845&idx=2&sn=31371431bcd09d71eefa5f880d8a2a6c&scene=5#rd

The April-June 2015 Newsletter of The GP-TCM Research Association



VERY IMPORTANT *The 4th GP-TCM RA Annual Meeting: Joint Meeting of the GP-TCM Research Association, the TCM Chemistry Specialty Committee and the TCM Pharmaceutical Analysis Specialty Committee of the World Federation of Chinese Medicine Societies (13th - 15th July 2015, Mons, Belgium):* The meeting will be open from 13th to 15th July 2015; a pre-meeting debate on regulatory challenges and a get-together party will take place on the 12th. This conference will focus on relevant and contemporary issues of research progress in traditional Chinese medicine and natural medicines, especially on the topics of Chinese medical theory natural product chemistry, herbal analysis, pharmacology and toxicology, quality control and standardization, clinical studies, regulatory affairs as well as acupuncture and moxibustion. The meeting will provide an excellent platform for regulatory-industrial-academic exchanges and potential innovative research collaborations on various challenges of TCM. We will also invite representatives from the European regulatory agencies. The meeting will focus on "Traditional medicines: Science meets culture" and will fit in the major Mons 2015 event, as the town is the European capital of culture for 2015. For the meeting programme, as well as more detailed and constantly updated information about the meeting, visit www.umons.ac.be/tcm-mons2015 **Please register and reserve your hotel rooms quick! Places are limited...**



Corporate Members, please read! To serve our Corporate Members better, we have started some new initiatives. In particular, we have reserved two 2-hour sessions as Corporate Members' Showcase, consisting of 8 x 30-min sessions (or 12 x 20-min sessions). Corporate members (academic or industrial) are invited to showcase your achievements in terms of academic, scientific and clinical studies, expertise in quality control and standardisation, as well as commercial successes on herbal formulations. There will also be exhibition booths for your use.

To register for the meeting, please check: <http://www.umons.ac.be/tcm-mons2015> Note the opportunity to showcase your company/university/institute is on a first-come-first-served basis.

社团会员请注意： 今年7月13-15日，第四届中医药规范研究学会年会和世界中医药学会联合会中药化学专业委员会、中药分析专业委员会合作，在比利时蒙斯（Mons - 2015 欧洲文化之都）举行。为了答谢社团会员多年的支持，我们特别安排了两场 **Corporate Members' Showcase**（每场120分钟；一共可以容纳8个30分钟，或是12个20分钟的演讲），也将有展位免费使用。各位社团会员可以运用这个机会展示你们大学、研究机构和企业的中医药科研成果和转化。名额有限，敬请踊跃报名，先到先得！

Great news: During the meeting period of time, major exhibition featuring no ink or brushes, but plenty of monumental sculptural works that highlight the new relationship between some twenty Chinese artists and the three-dimensionality of sculpture and its materials will be on exhibition in town. **In addition, the Mons Town Hall will be open to welcome our participants!** The oldest part of the Town Hall, located at the heart of the city, was constructed between 1458-1477.



Former Belgian Prime Minister Elio Di Rupo, now Mayor of Mons, receives an exclusive interview with China Daily in Mons, Belgium April 2, 2015. [Photo by Fu Jing/chinadaily.com.cn]

The April-June 2015 Newsletter of The GP-TCM Research Association



Although primarily built during the second half of the 15th century, it retains a rather accentuated Gothic style strongly resembling the Collegiate Church of Saint Waudru. Of particular interest are the Reception Chambers, built between the 16th and 18th-19th centuries. The Mayor's Chamber contains a collection of masterpieces of Mons silversmiths, as well as tapestries dating from the 17th century. These tapestries were actually a gift to the town from Louis XIV, the King of France, after the siege of 1691. The Mayor's garden, located behind the main building, is a picturesque and beautiful spot containing, most notably, the "Ropieur" fountain, a bronze work representing a young lad from the town.

If you want to know the latest views on China of Elio Di Rupo, Mons Mayor and Former Prime Minister of Belgium, you can visit:

http://www.chinadaily.com.cn/world/2015-04/03/content_19995448.htm

<http://www.mons2015.eu/en/fervant-china>

http://www.mons.be/decouvrir/patrimoine/patrimoine-civil/copy_of_hotel-de-ville

<http://www.belgium-tourism.be/informations/tourist-attractions-mons-mons-town-hall/en/V/30542.html>

GP-TCM RA News

1. President-Elect's visits to Corporate Members in China

To maintain active links with existing GP-TCM RA members and to recruit new ones, President-Elect Tai-Ping Fan went on a 3-week academic visits in April to 4 corporate members in Beijing, Shijiazhuang, Chengdu and Xi'an. Jointly invited by President XU Anlong 徐安龙 and Dean of College of Pharmacy, Professor LIN Ruichao 林瑞超, he gave a special lecture at Beijing University of Chinese Medicine and held three meetings for exchanging views with academic and research staff, International Office and research students.

He also paid a special visit to the Headquarters of the World Federation of Chinese Medicine Societies (WFCMS), and congratulated Prof. LI Zhenje 李振吉 on forming formal relations with the World Health Organization (see details below). They had extensive discussions on how to implement active collaborations between WFCMS and GP-TCM RA, e.g. joint meetings and World Journal of Traditional Chinese Medicine (WJTCM).

At the invitation of Prof. LI En 李恩, he delivered a lecture at Hebei Medical University, Shijiazhuang. This was followed by a visit to Yiling Pharmaceuticals and the new Yiling Health City 以岭健康城, where he had a fruitful meeting with Academician WU Yiling 吴以岭院士.



Prof. LI Zhenje and Tai-Ping Fan



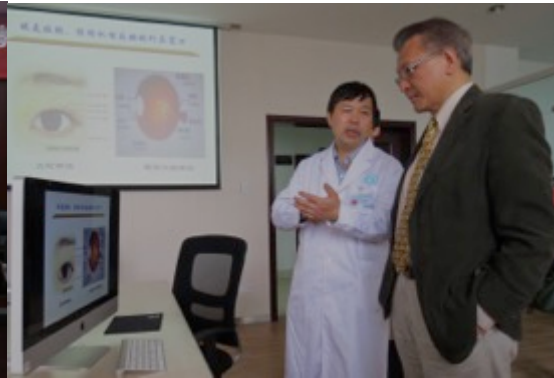
Academician WU Yiling (L2), Prof. LI En and Tai-Ping Fan

At Chengdu University of TCM, President LIANG Fanrong 梁繁荣 and Vice-President AN Qu 安劬 hosted Tai-Ping's visit, which included a lecture at College of Pharmacy and visit to Sichuan Key Laboratory of Visual Function Protection, directed by Prof. DUAN Junguo's 段俊国.

The April-June 2015 Newsletter of The GP-TCM Research Association



Vice-President AN (L3), Tai-Ping and President LIANG (R3)



Prof. DUAN Junguo & Tai-Ping

At Xi'an, Tai-Ping was appointed a special expert in the 100 Talents Program of Shaanxi Province 陕西省百人计划特聘专家, in recognition of his long-term collaboration with Northwest University (NWU). He was warmly welcomed by the Dean of School of Life Sciences, Prof. LI Baoguo 李保国. Tai-Ping also had extensive discussions with Prof. ZHENG Xiaohui 郑晓晖 and his colleagues at NWU about the future R&D directions of a novel metabolite of Danshen Dripping Pills - isopropyl 3-(3,4-dihydroxyphenyl)-2-hydroxypropanoate (IDHP; *Br J Pharmacol.* doi: 10.1111/bph.13133), as well as attending the 20th National Symposium and Exhibition on Chromatography.



The 20th National Symposium and Exhibition on Chromatography

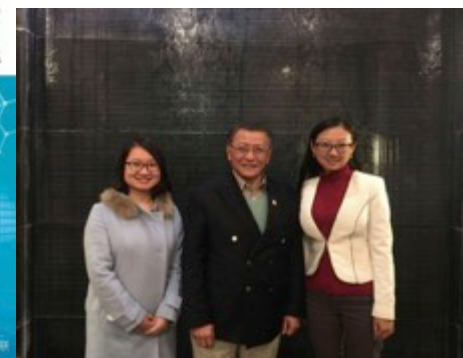


Tai-Ping, Prof. LI Baoguo (L2), Prof. ZHENG Xiaohui (R1)

2. President De-An Guo, Secretary-General Nicola Robinson and President-Elect Tai-Ping Fan visited Editorial Office of World Journal of Traditional Chinese Medicine (WJTCM)



Secretary-General Nicola Robinson (L1), Prof. Jian-Ping Liu (L2), President De-an Guo (R3) and senior editorial staff of WJTCM



President-Elect Tai-Ping Fan with ZHANG Wenting 張文婷 (L) and XU Hui 徐暉 (R)

The April-June 2015 Newsletter of The GP-TCM Research Association



Sounding Board: This section is reserved for GP-TCM RA members to express their opinions, share their views and comment on publications in previous issues of the GP-TCM RA Newsletters. All members are sincerely invited to contribute proactively. Please e-mail your Co-Editors Dr Tai-Ping Fan (tpf1000@cam.ac.uk) and Dr Qihe Xu (qihe.xu@kcl.ac.uk).

1. Prof. Min Li's 李敏 Research Team at School of Chinese Medicine, Hong Kong Baptist University Won Best Poster Award at the 7th International Symposium on Autophagy. Prof. Min Li and her research team from Mr. and Mrs. Ko Chi Ming Centre for Parkinson's Disease Research (CPDR), School of Chinese Medicine (SCM), Hong Kong Baptist University (HKBU) has recently won the Best Poster Award at the 7th International Symposium on Autophagy held from 19 to 23 March, 2015 in Huangshan, China. Developed from the research of the team, the poster of Dr. Juxian SONG, Research Assistant Professor, entitled "A synthesized curcumin derivative activates TFEB to promote autophagy and lysosome biogenesis and protect neurons independent of mTOR inhibition" was one of the two best posters selected from about 100 posters.

Autophagy is a highly conserved homeostatic pathway by which cells transport damaged proteins and organelles to lysosomes for degradation. Prof. Li's team has been actively engaged in the identification and development of novel autophagy regulators derived from Chinese medicines for the prevention and treatment of neurodegenerative diseases, including Parkinson's disease and Alzheimer's disease.

Transcription factor EB (TFEB), a master regulator of autophagy and lysosome biogenesis, has been shown to be a very promising drug target for neuroprotection. Prof. Li said, "We have discovered a small molecule activator of TFEB, which is independent of mTOR inhibition. The discovery points towards the development of new drugs for treatment of neurodegenerative diseases. The award testifies the hard and good work of SCM in the field of autophagy, neurodegenerative diseases and drug discovery at the international advanced level."

Prof. Li invites collaborations from GP-TCM RA members: E-mail: limin@hkbu.edu.hk

URL: http://scm.hkbu.edu.hk/en/expertise/faculty_staff/full_list/index_id_9.html

<http://www.ncbi.nlm.nih.gov/pubmed/?term=li+min+baptist>



Left panel: Prof. Min LI (second from right) with her team member, Ms. Leilei CHEN (left), Dr. Juxian SONG (second from left) and Mr. Liangfeng LIU (right); **the middle panel:** Dr Juxian SONG received the Best Poster Award at 7th International Symposium on Autophagy; **the right panel:** the award certificate.

European observations

1. Independent report: Advice on regulating herbal medicines and practitioners (From: Department of Health, UK; First published: 26 March 2015): This report makes recommendations on whether to regulate practitioners of herbal medicine and the products they use to keep the public safe. The Herbal Medicines Working Group included representatives from the main herbal traditions and supported Professor Walker in his analysis of the issues and possible solutions. The recommendations of the report are mainly giving advice to the government on how the sector may be regulated to keep the public safe. The government will consider the advice and recommendations.

<https://www.gov.uk/government/publications/advice-on-regulating-herbal-medicines-and-practitioners>

The April-June 2015 Newsletter of The GP-TCM Research Association



2. Response to the Recommendations of the Report on the Regulation of Herbal Medicines and Herbal Practitioners 27 March 2015 - From the Chair European Herbal Practitioners Association (EHTPA):

<http://www.nimh.org.uk/wp-content/titkosuploads/2012/11/Response-to-the-Recommendations-from-Report-on-the-Regulation-of-Herbal-Medicines-and-Practitioners-27-March-2015.pdf>

3. The IMI 2 Call 5 indicative topic text is now available. The following topics are under consideration for inclusion in the call.

- **Patient perspective** elicitation on **benefits and risks** of medicinal products from development through the entire life cycle, for integration into benefit risk assessments by regulators and health technology assessment bodies
- **Diabetic kidney disease** biomarkers (DKD-BM)
- Inflammation and **Alzheimer's disease** (AD): modulating microglia function – focussing on TREM2 and CD33
- Understanding the role of **amyloid biomarkers** in the current and future diagnosis and management of patients across the spectrum of **cognitive impairment** (from pre-dementia to dementia)
- Evolving models of **patient engagement** and access for earlier identification of **Alzheimer's disease**: phased expansion study
- Apolipoprotein E (ApoE) biology to validated **Alzheimer's disease targets**

All information regarding future IMI Call topics is indicative and subject to change. Final information about future IMI Calls will be communicated after approval by the IMI Governing Board.

Full details can be found here:

http://www.imi.europa.eu/sites/default/files/uploads/documents/IMI2Call5/IMI2_C5_TEXT_FOR_WEB.pdf

4. Juncker Announces a High-Level Science Panel to Advise the EC: EC President Jean-Claude Juncker has announced a new science advice system that will include a high-level group of scientists to advise Commission policymakers.

The new 'High-Level Group of Independent Scientists' will be drawn from existing structures like national academies and advisory bodies and will provide timely, independent scientific advice that meets three overall objectives:

- Independent of institutional or political interests
- Brings together evidence and insights from different disciplines and approaches
- Transparent

The new high-level panel will replace the position of Chief Scientific Adviser, which was held by Professor Anne Glover and which was not continued under the new Commission of President Juncker. The announcement was made during a working lunch with a group of eminent scientists, including Sir Paul Nurse, President of the Royal Society. The next step is that Carlos Moedas, Commissioner for Research, Science and Innovation, will launch the process to appoint a new high-level panel over the next few months and it is expected that the panel will be operational by the autumn. Full details can be found in the following BBC report: <http://www.bbc.co.uk/news/science-environment-32167022>

The April-June 2015 Newsletter of The GP-TCM Research Association



China observations

1. WHO forms official ties with WFCMS in Beijing: A press conference was held by the World Federation of Chinese Medicine Societies (WFCMS) to announce the formal relations with World Health Organization (WHO) on 11th March 2015. Dr. Bernhard Schwartländer, WHO representative in China, representing Margaret Dr Margaret Chan, Director-General of WHO, attended the conference. This official relation was approved at the 136th Session of the WHO Executive Council Meeting in Jan. 2015 and the decision was corresponded to WFCMS in Feb. 2015.



<http://en.wfcms.org/wfcms/Englishpage/detatiils.jsp?id=3855> (English)

<http://www.wfcms.org/menuCon/contdetail.jsp?id=6248> (中文)

2. Reform to Ministry of Science and Technology (MoST): On March 11th Wan Gang, China's minister of science and technology, said in a press conference that the government will no longer authorize or fund science and technology projects directly, but focus instead on making development plans, assessing projects and monitoring evaluation and research funds. The whole reform is expected to be completed within three years. During this time the government will hand over the power of fund allocation from government agencies, such as the Ministry of Science and Technology, to third-party professional institutions.

3. Nature Outlook: Assessing Science (China) (*Nature* 2015;520(7549 supp): ppS1-S48): As China's research system matures, so must its policies for evaluating scientists and scientific output. But, as with any process of rapid change, there are obstacles to overcome to stimulate the most rigorous and original science — and translate that into the most useful societal benefits. The free-access special feature was published in end April 2015. It can be downloaded from the link below—Please especially note the interesting analysis on “China’s R&D Spend” (pages S8-S9), which serves as a snapshot of how and where the money is spent.

<http://www.nature.com/nature/outlook/assessing-science-china/index.html>

4. Blumenthal D, Hsiao W. Lessons from the East - China's rapidly evolving health care system. *N Engl J Med.* 2015;372:1281-5.

At first glance, China might seem unlikely to offer useful health care lessons to many other countries. Its health system exists within a unique geopolitical context: a country of more than 1.3 billion people, occupying a huge, diverse landmass, living under authoritarian single-party rule, and making an extraordinarily rapid transition from a Third-World to a First-World economy.

But first impressions can be misleading. Since its birth in 1949, the People's Republic of China has undertaken a series of remarkable health system experiments that are instructive at many levels. One of the most interesting lessons from the Chinese experience concerns the value of an institution that many countries take for granted: medical professionalism.

Because the changes in China's health care system have been so rapid and profound, it is helpful to briefly review its recent history.¹ What might be seen as the first of four phases began when the Chinese Communist Party took power in 1949...

<http://www.nejm.org/doi/full/10.1056/NEJMp1410425>

新英格兰杂志评说中国医疗 60 年带给世界的教训:

http://mp.weixin.qq.com/s?__biz=MjM5MjA4NjY4NQ==&mid=206485057&idx=1&sn=2f5da4458d3fba751526bd7c0a5a54fd&scene=5#rd

The April-June 2015 Newsletter of The GP-TCM Research Association



5. China's scientific progress hinges on access to data. It is getting harder for scientists in China to obtain the high-quality public data that they need for important research studies, says Zheng Wan in *Nature* on 28th April 2015. http://www.nature.com/news/china-s-scientific-progress-hinges-on-access-to-data-1.17426?WT.ec_id=NATURE-20150430

6. Cancer surge in China prompts rise of special patient hotels.

http://www.dddmag.com/news/2015/04/cancer-surge-china-prompts-rise-special-patient-hotels?et_cid=4512604&et_rid=45532557&type=cta

Breakthroughs in genomics, epigenomics and proteomics

1. Nicholas J. Schork. Personalized medicine: Time for one-person trials. *Nature* 2015; 520: 609-611. Precision medicine requires a different type of clinical trial that focuses on individual, not average, responses to therapy: http://www.nature.com/news/personalized-medicine-time-for-one-person-trials-1.17411?WT.ec_id=NATURE-20150430

2. Smith C. Proteomics: Diving Deep into Cell Signaling. *Science* 2015; 348: 355-357. New proteomics tools enable researchers to dive deeply into signaling networks, allowing them to tease out interactions among key molecules. But this comes with a new challenge of increased complexity. Can cell signaling scientists balance the bewildering complexity that comes with the discovery power of proteomics technology? http://www.sciencemag.org/site/products/lst_20150417.xhtml

3. The GTEx Consortium. The Genotype-Tissue Expression (GTEx) pilot analysis: Multitissue gene regulation in humans. *Science* 2015;348: 648-660. Sampling RNA from multiple tissues across the human body illuminates how genetic variation affects gene expression...

<http://www.sciencemag.org/content/348/6235/640.summary>
<http://www.sciencemag.org/content/348/6235/648.full>

4. Melé M et al. The human transcriptome across tissues and individuals. *Science* 2015;348: 660-665. RNA expression documents patterns of human transcriptome variation across individuals and tissues...

<http://www.sciencemag.org/content/348/6235/660.abstract>

5. Rivas MA et al. Effect of predicted protein-truncating genetic variants on the human transcriptome. *Science* 2015;348:666-669. Protein-truncated variants impact gene expression levels and splicing across human tissues...

<http://www.sciencemag.org/content/348/6235/666.full>

Future meetings

1. Nordic Natural Products Conference (NNPC) 2015: "Natural Products Research – Past, Present & Future" in honour of Prof. Lars Bohlin will be held June 15-16, 2015 in Almedalsbiblioteket, lecture hall E22 at Uppsala University Campus Gotland in the medieval city of Visby. Abstract submissions are cordially invited, and should be submitted before April 15th to christina.weden@fkog.uu.se using the abstract form available on the NNPC 2015 website:

www.fkog.uu.se/nnpc

2. The 19th International Congress PHYTOPHARM 2015 which will be held on July 21-24, 2015 in Bonn, Germany. Scientific program of Congress will consist of plenary lectures, oral communications and 8 symposia: (i) Medicinal plant products: challenges, safety and efficacy; (ii) Quality control of natural medicinal preparations; (iii) Pharmacology and Ethnopharmacology; (iv) Technology of natural medicinal products; (v) Advances in clinical studies of Phytotherapeutics; (vi) Regulation of herbal medicinal products and food; (vii) Supplements in Russia, the European Union and the USA; and (viii) Good practices in TCM. Special exhibitions will be organized during Congress. <http://www.ipharm.sp.ru/phyto2015.html>

The April-June 2015 Newsletter of The GP-TCM Research Association



3. The 9th SFRR-Africa and 4th IAMBR International Conference will be held in Mauritius at Hennessy Park Hotel from July 27-29 2015. The meeting are organized by the Society for Free Radical Research-Africa (SFRR-Africa) and the International Association for Medical and Biomedical Research (IAMBR). This conference will address current scientific challenges in nutrition and its impact on the management of health and diseases, therapeutic interventions, **pharmaceuticals from marine flora and fauna, pharmacognosy**, molecular biology and biomarkers of oxidative stress and occupational and environmental health. The deadline for abstract submission and registration is **April 15 2015**. Meeting announcement can be found: <http://vcilt.uom.ac.mu/sfrr/images/img/announcement.pdf>

4. International Conference & Exhibition of the Modernization of Chinese Medicine & Health Products (ICMCM), 13-15 August 2015, in Hong Kong, China:

HKTDC
**International Conference & Exhibition of
the Modernization of Chinese Medicine
& Health Products**
國際現代化中醫藥及健康產品展覽會暨會議

**13-15 August 2015
Hong Kong Convention
and Exhibition Centre**

Organised by the HKTDC and the Modernized Chinese Medicine International Association Ltd (MCMIA), the ICMCM takes place at the HKCEC, providing a leading global platform for the latest traditional Chinese medicine, health-care products and services. - See more at:

<http://www.hktdc.com/fair/icmcm-en/International-Conference-and-Exhibition-of-the-Modernization-of-Chinese-Medicine-and-Health-Products.html>

5. The 14th Meeting of Consortium for Globalization of Chinese Medicine (CGCM) will be held in **London Ontario, Canada on August 18 - 20, 2015**. Pre-meeting Workshops will also be held on **August 17, 2015**. The Meeting is organized by University of Western Ontario (Western University). It provides a platform for regulatory-industrial-academic exchanges and potential research collaborations on various frontiers of TCM.

For more details, please refer to the meeting website: <http://conference.uwo.ca/cgcm>.

- **Abstract submission deadline:** May 31, 2015.
- **Early registration deadline:** May 29, 2015 (EST 4pm).
https://www.conference.uwo.ca/cgcm_reg/index.cfm
- **Accommodation reservation:** <http://conference.uwo.ca/cgcm/accommodation.cfm>
- **Travel grant:** To support postgraduates to attend the 14th CGCM Meeting, up to 50 Travel Grants are now open for application. Awardees will receive travel grant, free accommodation (shared room) and waiver of registration fee. You may wish to encourage your postgraduates to submit abstracts and apply for the Travel Grant.

6. The 63rd International Congress and Annual Meeting of the Society for Medicinal Plant and Natural Product Research (GA), will be held in Budapest, Hungary, August 23-27, 2015.
<http://ga2015.hu/>

7. The 8th European Congress for Integrative Medicine (ECIM) 2015 will be held in Greater Copenhagen, Denmark, September 25-27, 2015. The ECIM 2015 Global Summit offers an innovative, solution-driven platform for physicians and healthcare practitioners, researchers and students, politicians and patients, to collectively exchange and discuss research and research findings in the field of integrative medicine and collectively work on the vision and science, economics and education for optimal healthcare. There will be moderated academic and scientific sessions and open-forum expert panel discussions with interactive feedback from these sessions, including ethnopharmacology. <http://www.nordicintegrativemedicine.com/contact/>; <http://ees.elsevier.com/eujim>

The April-June 2015 Newsletter of The GP-TCM Research Association



- Day One: Vision – Pre-Summit Nordic Symposium on Patient Engagement and Patient-Centered Healthcare
- Day Two: Economics & Science – Global Healthcare, Integrative Medicine Models, and Evidence-Based Research
- Day Three: Moving Forward – Integrated Healthcare Workforce, Education and Patient Care

Dr. Victor Dzau, MD (USA) President of the Institute of Medicine of the National Academies

Dr. David Eisenberg, MD (USA) Harvard School of Public Health Department of Nutrition

Prof. Torkel Falkenberg, PhD (SE) Integrative Care Science Center, Karolinska Institute, Department of Neurobiology

Dr. Peter Fisher, MD (UK) NHS Royal London Hospital for Integrated Medicine, Physician to the Queen of England

Prof. Lixing Lao, MD PhD(HK/USA) The University of Hong Kong Vivian Tam Wong Professorship in Integrative Medicine

Paulo de Tarso Riciero Lima, MD MSc (BR) Hospital Israelita Albert Einstein, Integrative Medicine Group

Dr. Victoria Maizes, MD (USA) Arizona Center for Integrative Medicine Fellowship in Integrative Medicine

Dr. Issac Mathai, MD (IN) Soukya International Holistic Health Centre

Dr Woodson Merrell, MD (USA) Mt. Sinai Beth Israel Hospital, Center for Health and Healing NYC

Prof. Avni Sali, MD PhD (AU) Director, National Institute of Integrative Medicine (NIIM)

Dr. Malcolm Taw, MD (USA) UCLA Collaborative Centers for Integrative Medicine, Center for East-West Medicine

Dr. Merlin Willcox (UK) University of Oxford

Prof. Claudia Witt, MD MBA (CH) Institute for Complementary and Integrative Medicine, University Hospital Zurich

8. ICTCMH 2015: The 2nd International Conference of Traditional and Complementary Medicine on Health will be held in Taipei, Taiwan, October 24-27, 2015.

The Journal of Traditional and Complementary Medicine (JTCM) is pleased to be hosting the 2nd International Conference of Traditional and Complementary Medicine on Health, ICTCMH 2015. JTCM is a global platform for communication and research about Eastern and Western traditional and complementary medical science. On behalf of the organizing committee, I am pleased to invite you to participate in ICTCMH 2015, which began in 2013 with ICTCMH 2013. ICTCMH 2015 will accelerate the globalization of traditional and complementary medicine through academic convergence, communication, exchange, and collaboration. The conference will convene international experts in traditional medicine, preventive herbal medicine, and dietary therapy to share recent findings and enhance international collaboration in the increasingly globalizing field of traditional and complementary medicine. We are pleased to invite individuals from a wide range of professional backgrounds to participate in this unique conference, including healthcare professionals, policy makers, researchers, advocates, and anyone interested in health promotion and prevention medicine.

- > Registration: 24th October
- > Welcome Reception: 24th October
- > Opening Ceremony: 25th October
- > Gala dinner: 26th October
- > Tour: 27th October

Excellent scientific programmes: <http://www.ictcmh2015.org.tw/program.php>

Panels of distinguished speakers: <http://www.ictcmh2015.org.tw/Speakers.php>

8. The China Academy of Medical Sciences (CAMS) and *The Lancet* family of journals invite abstract submissions from China for *The Lancet-CAMS Health Summit*, which will be held in Beijing, China on Oct 30–31, 2015.

<http://www.thelancet.com/journals/lancet/article/PIIS0140-6736%2814%2961406-9/fulltext>

9. The 16th Congress of the International Society of Ethnopharmacology (ISE) will held in Yulin, Guangxi, China, on May 16-18, 2016. The ISE is an international society of researchers dedicated to the interdisciplinary study of the pharmacological activities of traditional medicines. ISE is also committed to preservation and conservation of such practices for future generations.

<http://www.ethnopharmacology.org>

Other recommended readings

-  **1. Couzin-Frankel J. Medical research. Clinical trials get practical. *Science* 2015;**

The April-June 2015 Newsletter of The GP-TCM Research Association



348:382.

http://app.aaas-science.org/e/er?utm_src=email&s=1906&lid=59060&elq=6606ca3690e347fea1e2278afee58702

2. Overdue issues for all biomedical scientists' attention:

- **Researchers need help in making the statistical power of animal experiments clear.**
http://www.nature.com/news/numbers-matter-1.17315?WT.ec_id=NATURE-20150416
http://www.nature.com/news/uk-funders-demand-strong-statistics-for-animal-studies-1.17318?WT.ec_id=NATURE-20150416
- Jeffrey T. Leek and Roger D. Peng. **Statistics: P values are just the tip of the iceberg.** *Nature* 2015; 520: 612. Ridding science of shoddy statistics will require scrutiny of every step, not merely the last one...
http://www.nature.com/news/statistics-p-values-are-just-the-tip-of-the-iceberg-1.17412?WT.ec_id=NATURE-20150430
- Weissgerber TL, et al. **Beyond bar and line graphs: time for a new data presentation paradigm.** *PLoS Biol.* 2015;13(4):e1002128.
<http://journals.plos.org/plosbiology/article?id=10.1371/journal.pbio.1002128>

3. Nature announcement and policy: Time to tackle cells' mistaken identity

http://www.nature.com/polopoly_fs/1.17315!/menu/main/topColumns/topLeftColumn/pdf/520263b.pdf
go.nature.com/zqjubh

4. Kristin Lorent et al. Identification of a plant isoflavonoid that causes biliary atresia. *Sci Transl Med.* 2015;7(286):286ra67. A study in *Science Translational Medicine* is a classic example of how seemingly unlikely collaborators can come together to make surprising discoveries. An international team of gastroenterologists, pediatricians, natural products chemists, and veterinarians, working with zebrafish models and mouse cell cultures have discovered that a chemical found in Australian plants provides insights into the cause of a rare and debilitating disorder affecting newborns. This ailment, called biliary atresia (BA), is the most common indication for a liver transplant in children.

<http://www.sciencedaily.com/releases/2015/05/150506142556.htm>
<http://stm.sciencemag.org/content/7/286/286ra67>

Invitation from a journal special issue:

New Exploration of Chinese Herbal Medicines in Hepatology: This *Evidence-Based Complementary and Alternative Medicine* special issue aims to provide a platform for researchers to present recent findings and developments on herbal medicine in basic and clinical research of hepatology. As complementary and alternative treatment of liver diseases (acute and chronic hepatitis, alcoholic steatosis, fibrosis, cirrhosis and hepatocellular carcinoma, etc.), Chinese herbal medicines have been extensively studied worldwide. You are cordially invited to submit your original research or review articles for possible inclusion in this journal's special issue. Manuscript submission deadline: Friday, 23 October 2015.

Lead Guest Editor: Dr Yibin Feng, University of Hong Kong, Hong Kong.

Guest Editors: Dr Man-Fung Yuen, University of Hong Kong, Hong Kong; Dr Qihe Xu, King's College London (KCL), London; Dr Xiao-Yan Wen, University of Toronto, Toronto; Dr David Q. H. Wang, Saint Louis University, St. Louis. <http://www.hindawi.com/journals/ecam/si/502402/cfp/>

Acknowledgements

Contributions from Prof. **Rudolf Bauer** (Graz), Prof. **Kelvin Chan** (Sydney), Prof. **Pierre Duez** (Mons), Dr. **Tai-Ping Fan** (Cambridge), Dr **Yibin Feng** (Hong Kong), Prof. **Jan van der Greef** (Leiden), Prof. **Min Li** (Hong Kong), Prof. **Nicola Robinson** (London), Prof. **Lee-Yan Sheen** (Taipei), Prof. **Vivian Wong** (Hong Kong) Ms. **XU Hui** (Beijing) and Dr. **Qihe Xu** (London) are gratefully acknowledged.